

## WEK-B04 Bronchial Phantom

### >>> Instruction <<<

#### Product feature:

The overall branches of the bronchial model reach up to 5 levels;

It includes the glottic epiglottic part;

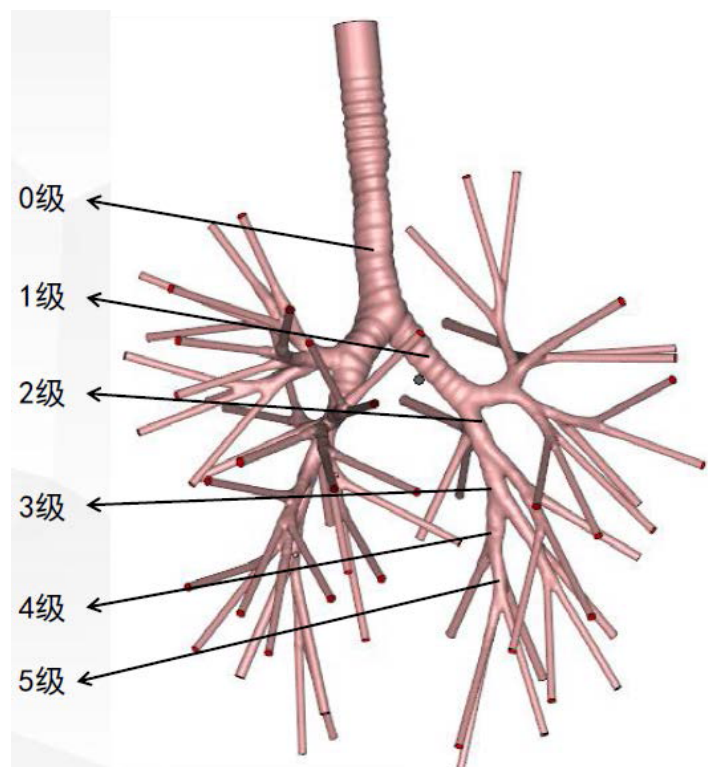
The bronchial model is made of soft silicone material (not transparent, with a pink inner and white outer color);

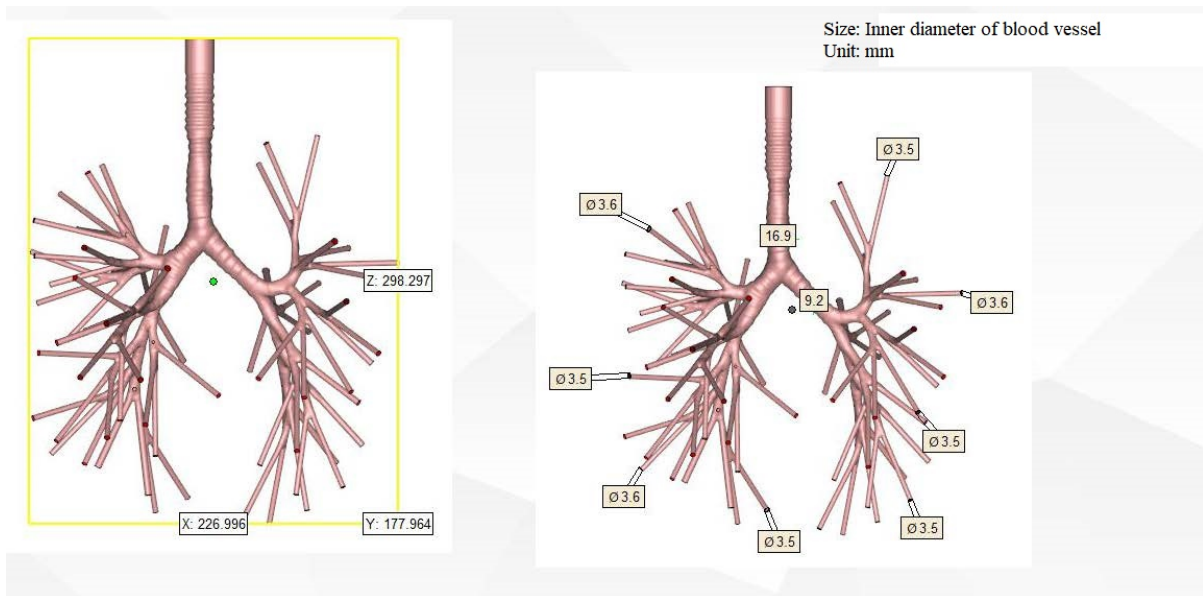
The overall shape is fixed using an acrylic base plate and hard flexible supports;

The entire model is placed in a black box, with an opening on the front of the black box, and the opening of the 1st level branch of the bronchus is connected to the opening of the black box;

The acrylic base plate is fixed to the bottom of the box using screws.

The entire bronchial model with acrylic can also be taken out and used separately, simply by unscrewing the fixing screws.





### Typical application:

- The model can be used for bronchoscopy examinations.
- Training in the anatomical identification of the trachea and bronchi under bronchoscopy;
- Examination, foreign body search and sputum suction using fiberoptic bronchoscopy and electronic bronchoscopy;
- Operational training;
- Training in the insertion, advancement and rotational operation of the bronchoscope within the bronchus, as well as control;
- Training in the centering operation of the bronchoscope tip.

